

A powerful complete package.

65 K.1

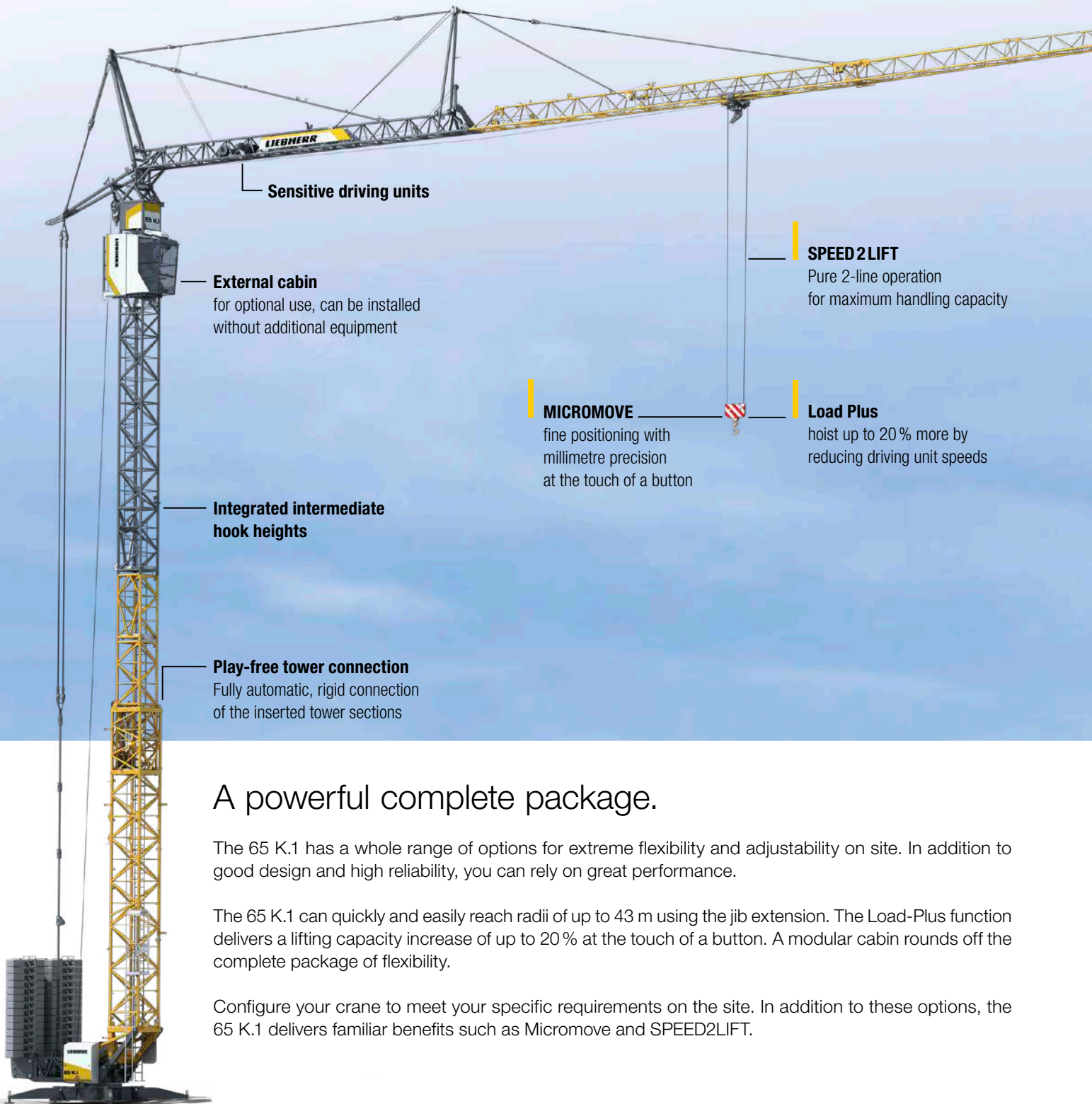


Technical data

Max. lifting capacity	4,500 kg
Max. radius	43 m
Max. lifting capacity at the jib head	1,350 kg
Max. hook height	49 m

LIEBHERR

65 K.1



Sensitive driving units

External cabin

for optional use, can be installed without additional equipment

Integrated intermediate hook heights

Play-free tower connection

Fully automatic, rigid connection of the inserted tower sections

MICROMOVE

fine positioning with millimetre precision at the touch of a button

SPEED 2 LIFT

Pure 2-line operation for maximum handling capacity

Load Plus

hoist up to 20 % more by reducing driving unit speeds

A powerful complete package.

The 65 K.1 has a whole range of options for extreme flexibility and adjustability on site. In addition to good design and high reliability, you can rely on great performance.

The 65 K.1 can quickly and easily reach radii of up to 43 m using the jib extension. The Load-Plus function delivers a lifting capacity increase of up to 20 % at the touch of a button. A modular cabin rounds off the complete package of flexibility.

Configure your crane to meet your specific requirements on the site. In addition to these options, the 65 K.1 delivers familiar benefits such as Micromove and SPEED2LIFT.



43 m jib length

jib can be split (28 m, 35 m, 40 m, 43 m)

Maximum hook height of 35 m

or **up to 49 m** with a 30° luffed position



Variable slewing radii

adjust the crane to the space available on site



14.25 m transport length

15° slope angle

simplifies transport on uneven terrain

Short overhang

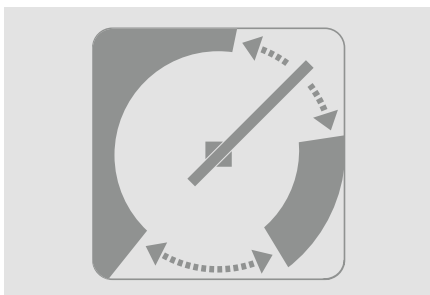
use the full range

Variable axle portfolio

various transport methods to suit your needs

Electronic operating-range limiting system

The most teach points on the bottom-slewing crane market. For safe operation.



LED construction site lamps

Four durable, reliable LED floodlights allow you to decide when your working day ends.



Modern radio control

Developed with customers, perfectly tailored to your needs.





Familiarly good – the K series.

From the very beginning ...

- Low-cost transport:
 - with a modular range of axles
 - all ready to go
- Low-cost assembly
 - with low-maintenance rope kinematics
 - thanks to self-ballasting mode
 - simple scaling
- Fast climbing allows various hook heights to be used:

– tower retracted	15.6 m
– tower extended	22.6 m
– 5 tower sections inserted	34.5 m
– 30° luffed jib position	49,3 m

... to a safe conclusion

- High handling capacities:
 - high-speed, low-maintenance, high-performance driving units
 - radio control and control system from the cabin
- Litronic –
 - safety-based control system with modern assistance systems
 - operating-range limiting system
 - SPEED2LIFT for high handling capacity
 - oscillation-damping system and wind force moment control for jib stabilisation during load transport
 - Micromove fine positioning system
 - lifting capacity increase of up to 20 % with Load-Plus
 - adjustable slewing gear modes for free adjustment of slewing properties