

Modular and economical

# The 150 EC-B 8 Litronic® Flat-Top crane

## Technical data

Max. lifting capacity	8,000 kg
Max. radius	62.5 m
Max. lifting capacity at the jib head	1,400 kg
Max. free-standing hook height	72.4 m

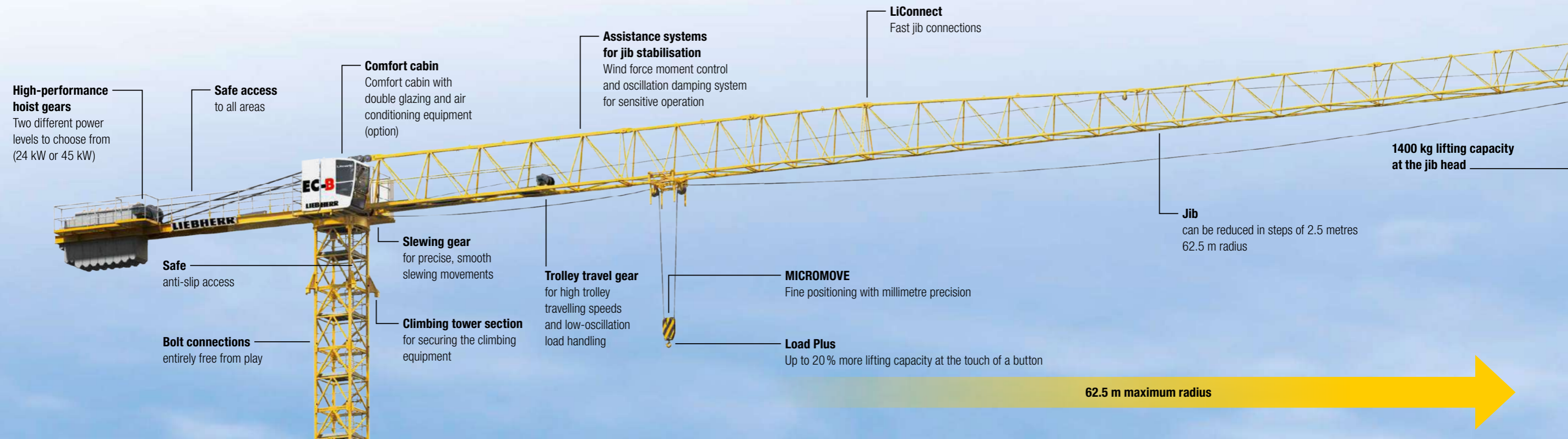


**+ 2.5 m jib length**

So that you can reach even further

# LIEBHERR

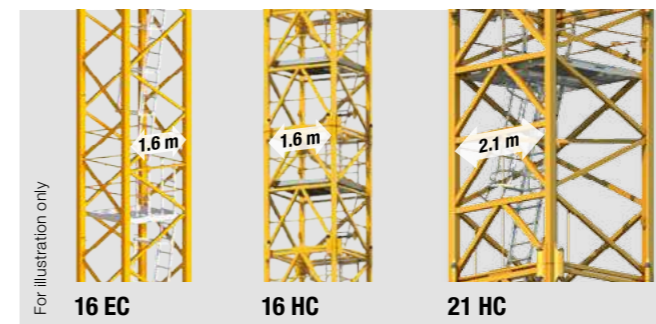
# The 150 EC-B 8 Litronic® Flat-Top crane



## Modular and economical.

When you invest in a crane, you want it to work for years and be suitable for a wide range of sites. The 150 EC-B 8 Litronic not only delivers the familiar Liebherr quality and service life, but is also extremely adaptable. And with a radius of 62.5 m, this crane has a greater range than any other in its segment.

In addition to the choice of two different hoist gears, the jib can be graduated particularly accurately in 2.5 m steps. There is also a range of tower systems for use with this crane. Various bases are available to enable the crane to be prepared better for a wide range of tasks. Foundation anchors or a cruciform base and a static or rail-going undercarriage may be used depending on the site.



### Variable tower range

- **16 EC:** Small external dimensions and simple design using hammer-drive pin connections
- **16 HC:** Small external dimensions and bolt connection entirely free from play for a long service life
- **21 HC:** High free-standing hook heights, high lifting capacities and bolt connection entirely free from play



### Compact head for enhanced assembly

On the 150 EC-B, the head consists of the complete slewing platform with switchgear and the cabin. This means that it can be assembled in a single hoist straight from the truck.

- Easily accessible platform with switchgear
- A-frame can be folded for container transport
- Slewing platform with folding handrails



## EC-B cranes – the ideal tool for your site.

### From the very beginning...

- Low-cost transport:
  - with just a few trucks
  - using containerisable package units
- Low-cost assembly
  - using adjustable assembly units to suit the mobile crane
  - with quick assembly connections using the Connect & Work system

### ... work safely

- High handling capacity:
  - high-speed, low-maintenance high-performance driving units manufactured in-house
  - radio-control possible
  - ergonomic workplace for the crane driver
- Litronic safety-based control system with modern assistance systems
  - ABB operating-range limiting system
  - anti-collision system (AKS interface)
  - Speed2Lift for high handling capacity
  - assistance systems for jib stabilisation
  - lifting capacity increase using Load-Plus
  - adjustable slewing gear modes
  - Micromove fine positioning system