

Modular and economical

# The 172 EC-B 8 Litronic® Flat-Top crane

## Technical data

Max. lifting capacity	8,000 kg
Max. radius	62.5 m
Max. lifting capacity at the jib head	1,800 kg
Max. free-standing hook height	71.4 m

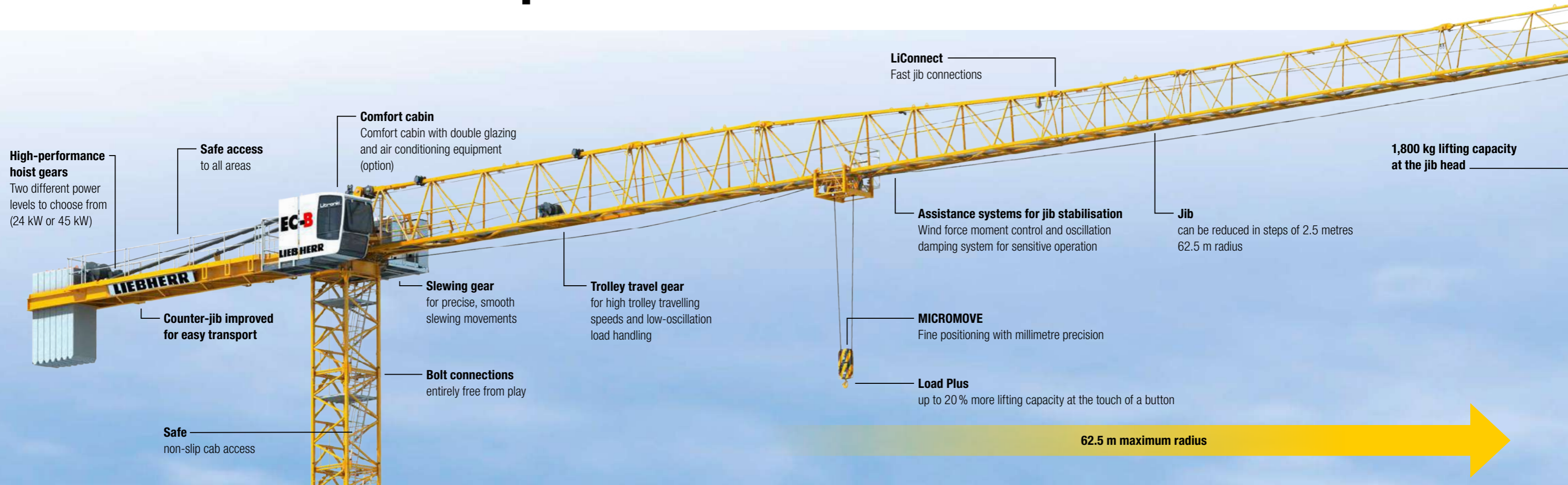


**+ 2.5 m jib length**

So that you can reach even further

# LIEBHERR

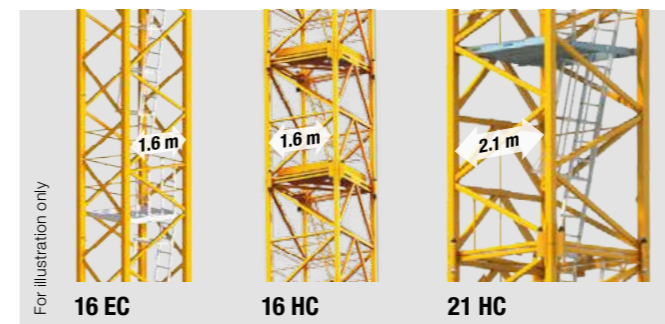
# The 172 EC-B 8 Litronic® Flat-Top crane



## Work quickly and safely.

Tower cranes play a key role on any construction site. Speed and efficiency are essential for hoisting and positioning loads.

The 172 EC-B 8 Litronic delivers high working speeds without compromising safety and precision. In addition to the choice of two different hoist gears, the jib can be graduated particularly accurately in 2.5 m steps. The modern control system with a wide range of assistance systems supports the crane driver in his work as he has access to high-speed, sensitive driving units on every single component. The erection engineers benefit from quick-release connections and the EC-B compact head for easier assembly. This enables them to benefit from high-speed, low-cost procedures with maximum safety.



### Variable tower range

- **16 EC:** Small external dimensions and simple design using hammer-drive pin connections
- **16 HC:** Small external dimensions and bolt connection entirely free from play for a long service life
- **21 HC:** High free-standing hook heights, high lifting capacities and bolt connection entirely free from play



### Compact head for enhanced assembly

On the 172 EC-B, the head consists of the complete slewing platform with switchgear and the cabin. This means that it can be assembled in a single hoist straight from the truck.

- Easily accessible platform with switchgear
- A-frame can be folded for container transport
- Slewing platform with folding handrails



## EC-B cranes – the ideal tool for your site.

### From the very beginning...

- Low-cost transport:
  - with just a few trucks
  - using containerisable package units
- Low-cost assembly
  - using adjustable assembly units to suit the mobile crane
  - with quick assembly connections using the Connect & Work system

### ... work safely

- High handling capacity:
  - high-speed, low-maintenance high-performance driving units manufactured in-house
  - radio-control possible
  - ergonomic workplace for the crane driver
- Litronic safety-based control system with modern assistance systems
  - ABB operating-range limiting system
  - anti-collision system (AKS interface)
  - Speed2Lift for high handling capacity
  - assistance systems for jib stabilisation
  - lifting capacity increase using Load-Plus
  - adjustable slewing gear modes
  - Micromove fine positioning system